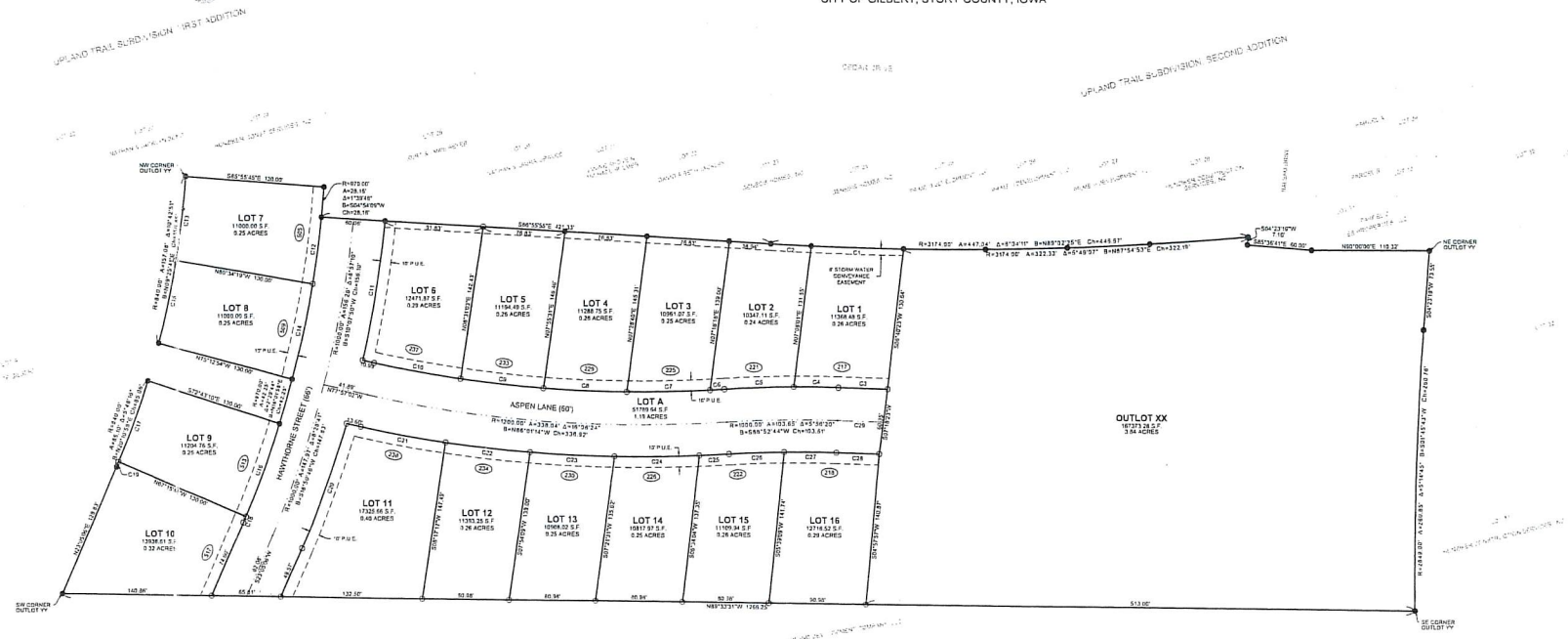


Filed By / Return To: ATS of Story Coun  
 212 SE 16th Street, Ames, IA 50010  
 File No. **2026-0117**

FINAL PLAT  
 UPLAND TRAIL SUBDIVISION,  
 FOURTH ADDITION  
 CITY OF GILBERT, STORY COUNTY, IOWA



Curve	Radius	Length	Delta	Bearing	Chord
C1	3174.00'	86.82'	1734.02°	S86°13'33"E	82.30'
C2	1174.00'	37.00'	741.00°	S87°18'00"E	37.00'
C3	3310.00'	46.07'	924.00°	N88°33'02"W	46.07'
C4	1590.00'	41.02'	819.00°	N89°19'00"W	41.02'
C5	1530.00'	44.43'	887.00°	S87°42'00"W	44.43'
C6	1170.00'	12.25'	244.50°	S88°14'00"W	12.25'
C7	1170.00'	78.04'	1549.50°	S88°28'13"W	78.07'
C8	1170.00'	78.04'	1749.50°	N87°42'23"W	78.07'
C9	1170.00'	78.04'	1749.50°	N87°42'23"W	78.07'
C10	1170.00'	43.10'	861.00°	N89°37'30"W	43.10'
C11	1520.00'	100.00'	1999.00°	N89°15'00"E	100.00'
C12	370.00'	63.53'	1270.50°	S87°34'00"W	63.53'
C13	640.00'	78.54'	1519.00°	N88°44'50"E	78.51'
C14	670.00'	80.69'	1619.00°	S12°08'23"W	80.66'
C15	640.00'	78.54'	1519.00°	N87°49'23"E	78.51'

Curve	Radius	Length	Delta	Bearing	Chord
C16	870.00'	93.30'	1872.00°	S20°10'00"W	93.30'
C17	640.00'	80.00'	1600.00°	N20°10'00"E	79.34'
C18	870.00'	93.30'	1872.00°	S20°10'00"W	93.30'
C19	640.00'	80.00'	1600.00°	N20°10'00"E	79.34'
C20	1000.00'	120.70'	2414.00°	S19°14'00"W	120.70'
C21	1200.00'	80.70'	1607.00°	N20°14'00"E	80.70'
C22	1200.00'	78.34'	1547.00°	N87°33'00"W	78.32'
C23	1200.00'	78.34'	1747.00°	N87°19'00"W	78.32'
C24	1200.00'	78.34'	1747.00°	N87°19'00"W	78.32'
C25	1200.00'	27.73'	554.50°	S87°31'00"W	27.73'
C26	370.00'	63.53'	1270.50°	S87°34'00"W	63.50'
C27	370.00'	44.84'	896.80°	N89°24'00"W	44.83'
C28	330.00'	48.20'	964.00°	N89°29'00"W	48.20'
C29	330.00'	43.16'	861.00°	N89°31'00"W	43.16'

Owner/Developer:  
 Upland Trail Community, LLC  
 105 S. 16th Street  
 Ames, IA 50010

Survey Description:  
 A subdivision of Outlot XX in Upland Trail Subdivision, Second Addition to the City of Gilbert, Story County, Iowa, containing 3.37 acres.

Note:  
 1. Lot A will be dedicated to the City of Gilbert for public right of way.  
 2. Outlot XX is reserved for future development.  
 3. Unless noted otherwise, all residential lots in this subdivision will have Public Utility Easements measuring 10' along front (shaded lines (as shown)) and 5' along all side and rear lines (not shown).

zoning: R-1  
 Building Setbacks:  
 Front: 5'  
 Side: 5'  
 Rear: 20'  
 Corner Lots: two fronts and two sides.

Instrument #: 2026-01179  
 02/13/2026 12:43:57 PM Total Pages: 15  
 SURV SURVEYS AND PLATS  
 Recording Fee: \$ 82.00  
 Stacie Herridge, Recorder, Story County Iowa

FINAL PLAT  
 UPLAND TRAIL SUBDIVISION, FOURTH ADDITION  
 A SUBDIVISION OF OUTLOT XX IN UPLAND TRAIL SUBDIVISION,  
 SECOND ADDITION, CITY OF GILBERT, STORY COUNTY, IOWA  
 IOR# 7150.010 DATE: 11/24/25 PAGE: 1 OF 1

I hereby certify that this true and correct document was prepared by me or under my direct supervision and that I am a duly Licensed Professional Land Surveyor under the laws of the State of Iowa.  
 R. Kelly et al 12/8/25  
 License Number: 17181  
 Date: 12/8/25  
 by whom received date is December 31, 2025

