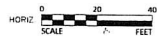


Instrument #: 2017-06842  
 07/10/2017 03:05:37 PM Total Pages: 10  
 SURV SURVEYS AND PLATS  
 Recording Fee: \$ 57.00  
 Stacie Herridge, Recorder, Story County Iowa

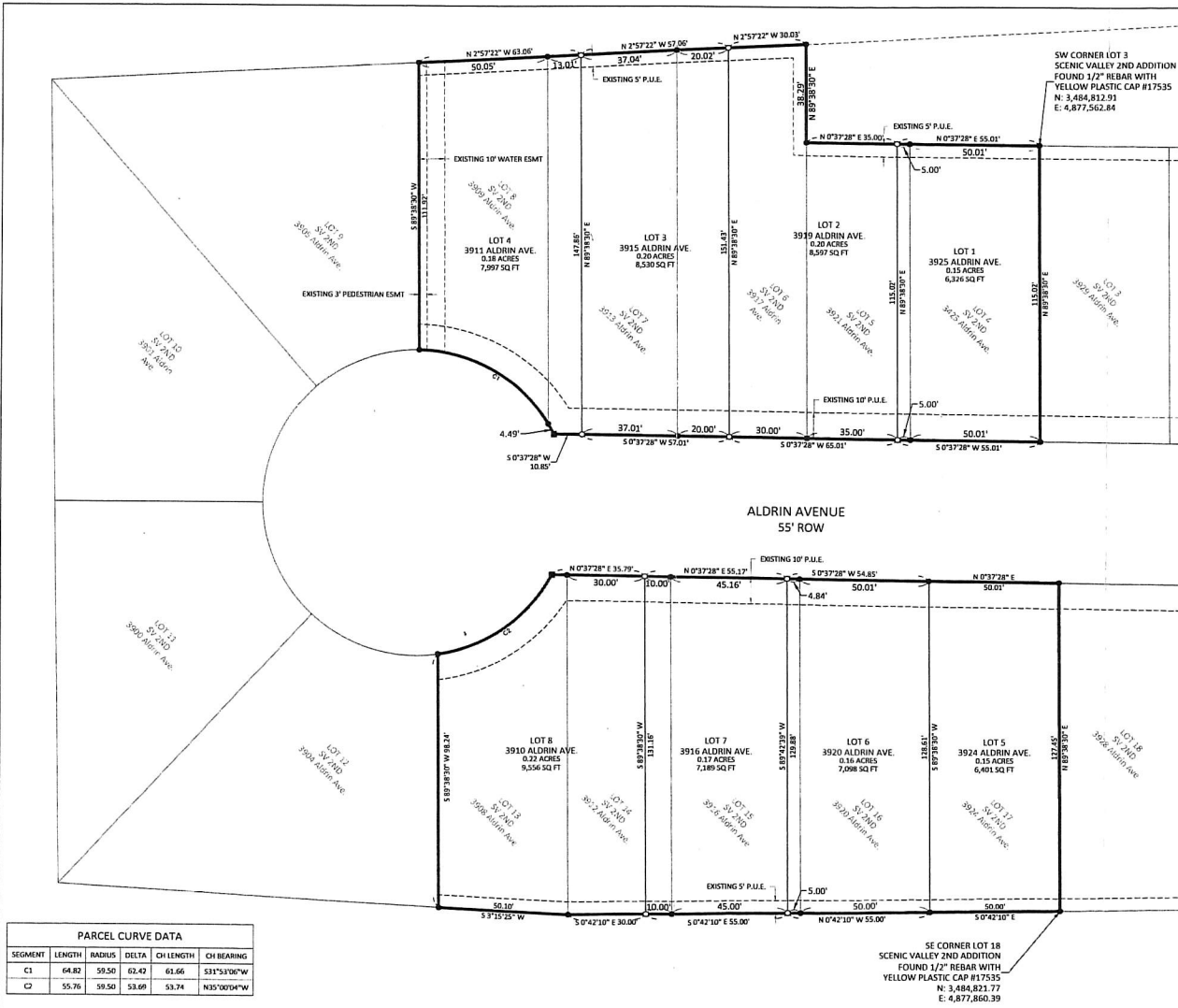
Filed By / Return To: **ATS of Story County**  
 212 SB 16th Street, Ames, IA 50010  
 File No. **COULTER**

INDEX LEGEND
LOCATION PART OF THE EAST 1/2 OF THE NORTHEAST 1/4 OF SECTION 29-84-24
REQUESTOR HUNZIKER LAND DEVELOPMENT
PROFESSOR HUNZIKER DEVELOPMENT COMPANY LLC
SURVEYOR EUGENE DREYER
SURVEYOR COMPANY BOLTON & MENK, INC.
RETURN TO: EUGENE DREYER, BOLTON & MENK, 2730 FORD STREET, P.O. BOX 250, AMES, IA 50010

SEGMENT	LENGTH	RADIUS	DELTA	CH LENGTH	CH BEARING
C1	64.82	59.50	62.42	61.66	S31°5'00"W
C2	55.76	59.50	53.69	53.74	N05°00'04"W



© Bolton & Menk, Inc. 2014. All Rights Reserved  
 4154107678133136495/AR/C01/10466\_Venue.PLA1-001 - 06/20/17 10:27:15 - RCV.am



I hereby certify that this surveying document was prepared by me and the related work was performed by me or under my direct professional supervision and that I am a duly licensed professional surveyor under the laws of the State of Iowa.

EUGENE R. DREYER  
 REG. NO. 17535 DATE 6/20/17  
 MY LICENSE RENEWAL DATE IS DECEMBER 31, 2018  
 PAGES OR SHEETS COVERED BY THIS SEAL:  
 THIS SHEET

- LEGEND**
- FOUND 3/2" REBAR WITH YELLOW PLASTIC CAP #17535, UNLESS OTHERWISE NOTED.
  - ▲ FOUND SECTION CORNER
  - SET 3/2" x 30" REBAR WITH YELLOW PLASTIC CAP #17535
  - SET 3/2" x 30" REBAR WITH YELLOW PLASTIC CAP #17535
  - (R) RECORDED DIMENSION
  - P.U.E. PUBLIC UTILITY EASEMENT
  - S.W.F.E. STORM WATER FLOWAGE EASEMENT

**OWNED AND REQUESTED BY:**  
 HUNZIKER DEVELOPMENT COMPANY LLC  
 105 S. 16TH STREET  
 AMES, IA 50010

**LEGAL DESCRIPTION**  
 A TRACT OF LAND, BEING AN OFFICIAL REPLAT OF LOTS 4-8 AND LOTS 13-17, SCENIC VALLEY SUBDIVISION SECOND ADDITION, AMES, STORY COUNTY, IOWA.

**NOTES:**

- SCENIC VALLEY SUBDIVISION, THIRD ADDITION, IS IN THE EAST 1/2 OF THE NORTHEAST 1/4 OF SECTION 29-84-24.
- THE NORTH LINE OF LOT 1 BEARS N 89°38'30" E AS SHOWN ON THE FINAL PLAT FOR SCENIC VALLEY SUBDIVISION, SECOND ADDITION.
- TOTAL AREA OF THE SECOND ADDITION IS 1.53 ACRES, OR 66,693 SQUARE FEET.
- SOIL BORINGS ARE REQUIRED IN AREAS WITHIN THIS PLAT WHICH HAVE BEEN IDENTIFIED BY THE CITY OF AMES AS HAVING SOILS THAT MAKE CONSTRUCTION OF BUILDINGS DIFFICULT.
- COORDINATES SHOWN ARE ON IOWA STATE PLANE COORDINATE SYSTEM, IOWA NORTH ZONE, NAD 83.
- THIS SURVEY MEETS OR EXCEEDS IOWA CODE 355
- EXISTING EASEMENTS SHOWN WERE RECORDED IN BOOK AND PAGE #2016-006327 AS PART OF SCENIC VALLEY 2ND ADDITION.

**BOLTON & MENK**  
 2730 FORD ST., P.O. BOX 668  
 AMES, IOWA 50010  
 Phone: (515) 231-6100  
 Email: Ames@bolton-menk.com  
 www.bolton-menk.com

REV	BY	DATE	HUNZIKER DEVELOPMENT CO. SCENIC VALLEY SUBDIVISION - THIRD ADDITION	SHEET 1 OF 1