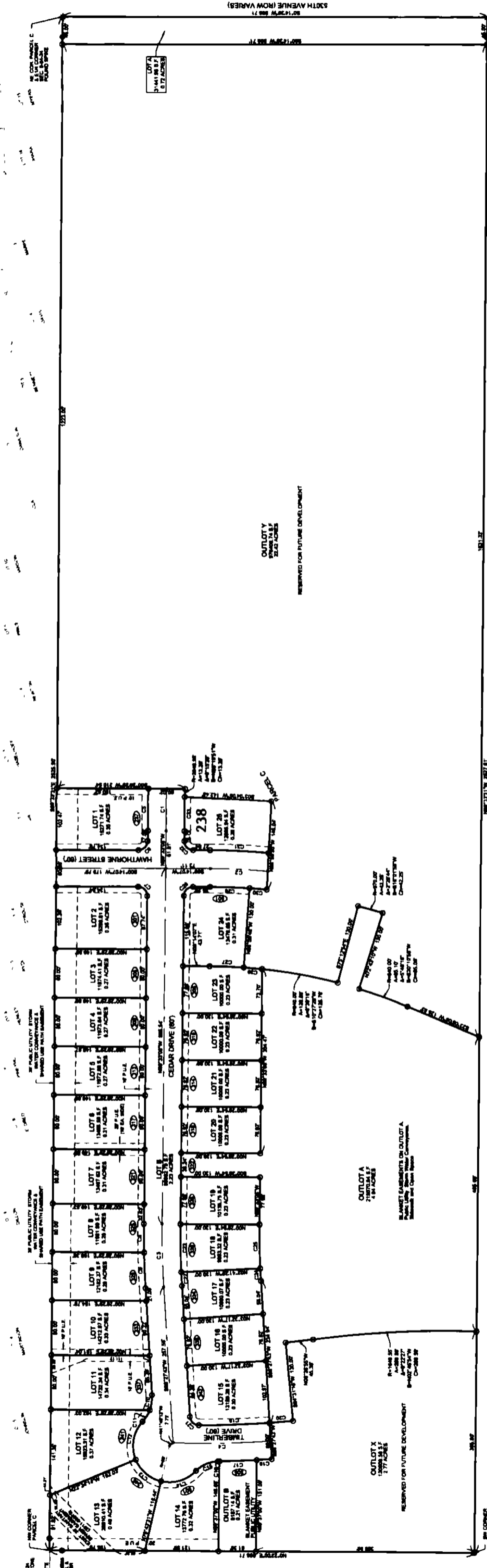


**FINAL PLAT**  
**UPLAND TRAIL SUBDIVISION,**  
**FIRST ADDITION**  
 CITY OF GILBERT, STORY COUNTY, IOWA

Filed By / Return To: ATS of Story County  
 212 SE 16th Street, Ames, IA 50010  
 File No. COU157



**STREET CENTERLINE CURVE DATA**

Curve #	Radius	Length	Delta	Bearing	Chord
C1	2000.00	88.82	17.297°	S87°33'27.74\"	88.82
C2	1000.00	44.41	8.649°	S87°33'27.74\"	44.41
C3	1000.00	44.41	8.649°	S87°33'27.74\"	44.41
C4	1000.00	44.41	8.649°	S87°33'27.74\"	44.41

**LOT LINE CURVE DATA**

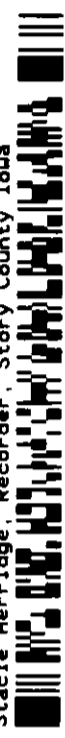
Curve #	Radius	Length	Delta	Bearing	Chord
C5	1000.00	44.41	8.649°	S87°33'27.74\"	44.41
C6	1000.00	44.41	8.649°	S87°33'27.74\"	44.41
C7	1000.00	44.41	8.649°	S87°33'27.74\"	44.41
C8	1000.00	44.41	8.649°	S87°33'27.74\"	44.41

**LOT LINE CURVE DATA**

Curve #	Radius	Length	Delta	Bearing	Chord
C9	1000.00	44.41	8.649°	S87°33'27.74\"	44.41
C10	1000.00	44.41	8.649°	S87°33'27.74\"	44.41
C11	1000.00	44.41	8.649°	S87°33'27.74\"	44.41
C12	1000.00	44.41	8.649°	S87°33'27.74\"	44.41

Survey Description:  
 A subdivision of Parcel C as shown on the Plat of Survey filed at Plat No. 2017-00002, in the County of Gilbert, Story County, Iowa, containing 40.53 acres, which includes 0.72 acres of existing right of way.  
 Notes:  
 1. Outlots A, B, C, D, E, F, G, H, and X are reserved for future development.  
 2. Outlots A and B will be dedicated to the City of Gilbert for public right of way.  
 3. Outlots C, D, E, F, G, H, and X are reserved for future development.  
 Easements:  
 Easement for utility lines (as shown) and 5' along all sides and rear lines (Easement shown).  
 Zoning District: R-1-A  
 Public Utility: Public Utility Company, LLC  
 State: IA  
 County: Story  
 Corner Lots: Two front and two sides.

Instrument #: 2020-08577  
 07/30/2020 02:41:23 PM Total Pages: 1  
 SURV SURVEYS AND PLATS  
 Recording Fee: \$ 0.00  
 Stacie Herridge, Recorder, Story County, Iowa



● = FOUND 1/2 REBAR W/ YELLOW CAP #1781  
 ○ = SET 1/2 REBAR W/ YELLOW CAP #1781  
 ⊗ = STREET ADDRESS

