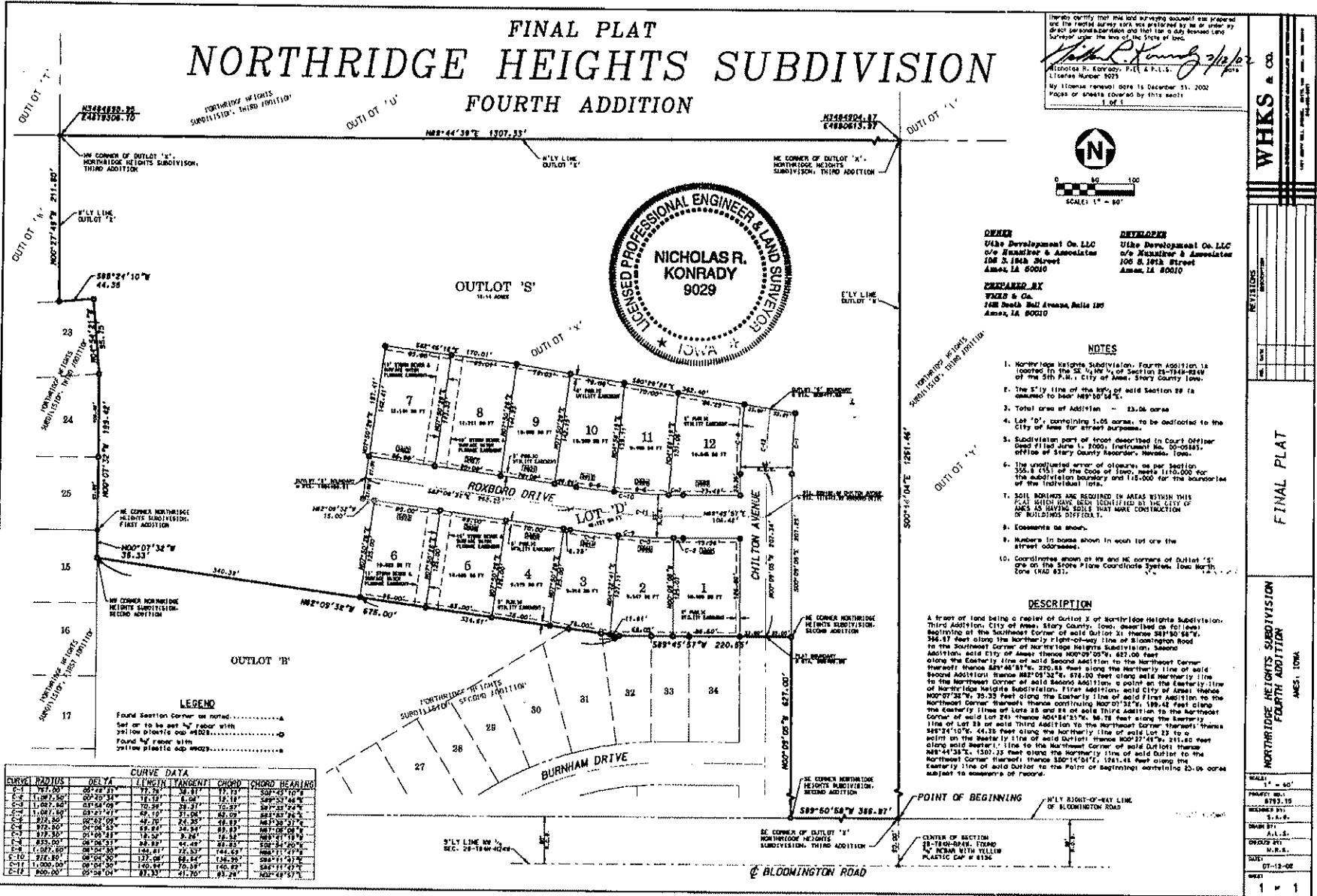


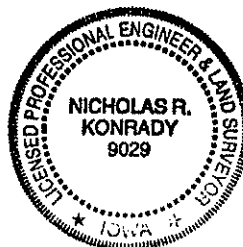
INST. NO. 02-12370
 STORY COUNTY, IOWA
 FILED FOR RECORD 315
 AUG 19 2002 PM
 SUSAN L. VANDE KAMP, Recorder

Fixed by Bureau for
 A.T.S. of Story County
 418 S.W. 5th, Ames, IA 50001
 No. 02-1178

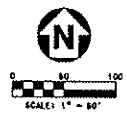
Prepared by: Nicholas R. Konrad, WHKS & Co. 1421 S. Bell, Suite 103, Ames IA 50010 Phone 515-663-9997



FINAL PLAT NORTHRIDGE HEIGHTS SUBDIVISION FOURTH ADDITION



I hereby certify that the lot and acreage shown on this plat were prepared and the field survey work was conducted by me or under my direct supervision and that I am a duly licensed land surveyor under the laws of the State of Iowa.
 Nicholas R. Konrad, P.E. & L.S.
 1008 South Bell Avenue, Ames, IA 50010
 My license renewal date is December 31, 2002
 Pages of sheets covered by this sheet: 1 of 1



OWNER
 City Development Co. LLC
 c/o Hamilton & Associates
 106 S. 19th Street
 Ames, IA 50009

DEVELOPER
 City Development Co. LLC
 c/o Hamilton & Associates
 106 S. 19th Street
 Ames, IA 50010

PREPARED BY
 WHKS & Co.
 1421 South Bell Avenue, Suite 103
 Ames, IA 50010

- NOTES**
- Northridge Heights Subdivision, Fourth Addition is located in the SE 1/4 of Section 25-1944-824W of the 5th P.M., City of Ames, Story County, Iowa.
 - The 5'ly line of said lot 22 is assumed to bear N89°07'32"W to the center of the street.
 - Total area of Addition = 23.26 acres
 - Lot 'D', comprising 1.05 acres, to be dedicated to the City of Ames for street purposes.
 - Subdivision plat of lots described in Court Order Dated filed June 1, 2000, Instrument No. 20-00883, Office of Story County Recorder, Ames, Iowa.
 - The unsplit area of all parcels on this plat (51% of the total area) is 110,000 sq. ft. for the subdivision boundary and 145,000 sq. ft. for the boundaries of the individual lots.
 - SOIL NOTICES ARE REQUIRED IN AREAS WITHIN THIS PLAT WHICH HAVE BEEN IDENTIFIED BY THE CITY OF AMES AS HAVING SOILS THAT MAKE CONSTRUCTION OF BUILDINGS DIFFICULT.
 - Easements as shown.
 - Numbers in boxes shown in south lot are the street addresses.
 - Coordinates shown at NE and NW corners of Outlot 'F' are of the State Plane Coordinate System, Iowa North Zone (NAD 83).

DESCRIPTION

A tract of land being a part of District 2 of Northridge Heights Subdivision, Third Addition, City of Ames, Story County, Iowa, described as follows: beginning at the Southwest Corner of said Outlot 21, thence S87°50'58"W, 356.87 feet along the northerly right-of-way line of Bloomington Road to the Southwest Corner of Northridge Heights Subdivision, Second Addition, City of Ames, thence N00°09'25"W, 627.00 feet along the easterly line of said Second Addition to the Northwest Corner thereof, thence S87°45'57"W, 270.55 feet along the northerly line of said Second Addition, thence N82°03'23"E, 678.00 feet along said northerly line to the Northeast Corner of said Second Addition, a point on the easterly line of Northridge Heights Subdivision, said City of Ames, thence to the N00°07'32"W, 75.33 feet along the easterly line of said First Addition to the Northwest Corner thereof, thence continuing N00°07'32"W, 199.43 feet along the easterly line of Lots 28 and 29 of said Third Addition to the Northeast Corner of said Lot 28, thence S00°14'04"E, 1581.43 feet along the easterly line of said Outlot to the Point of Beginning, containing 23.26 acres, subject to easements of record.

LEGEND

Found Section Corner as noted.....▲
 Set up to be used "if" found with yellow plastic cap.....▲
 Found "if" corner with yellow plastic cap.....▲
 Found "if" corner with yellow plastic cap.....▲

CURVE	RADIUS	DELTA	CHORD	CHORD BEARING
1	767.00	89°27'27"	77.79	S69°27'27"
2	1187.86	89°27'27"	77.79	S69°27'27"
3	1187.86	89°27'27"	77.79	S69°27'27"
4	1187.86	89°27'27"	77.79	S69°27'27"
5	1187.86	89°27'27"	77.79	S69°27'27"
6	1187.86	89°27'27"	77.79	S69°27'27"
7	1187.86	89°27'27"	77.79	S69°27'27"
8	1187.86	89°27'27"	77.79	S69°27'27"
9	1187.86	89°27'27"	77.79	S69°27'27"
10	1187.86	89°27'27"	77.79	S69°27'27"
11	1187.86	89°27'27"	77.79	S69°27'27"
12	1187.86	89°27'27"	77.79	S69°27'27"
13	1187.86	89°27'27"	77.79	S69°27'27"
14	1187.86	89°27'27"	77.79	S69°27'27"
15	1187.86	89°27'27"	77.79	S69°27'27"
16	1187.86	89°27'27"	77.79	S69°27'27"
17	1187.86	89°27'27"	77.79	S69°27'27"
18	1187.86	89°27'27"	77.79	S69°27'27"
19	1187.86	89°27'27"	77.79	S69°27'27"
20	1187.86	89°27'27"	77.79	S69°27'27"
21	1187.86	89°27'27"	77.79	S69°27'27"
22	1187.86	89°27'27"	77.79	S69°27'27"
23	1187.86	89°27'27"	77.79	S69°27'27"
24	1187.86	89°27'27"	77.79	S69°27'27"
25	1187.86	89°27'27"	77.79	S69°27'27"
26	1187.86	89°27'27"	77.79	S69°27'27"
27	1187.86	89°27'27"	77.79	S69°27'27"
28	1187.86	89°27'27"	77.79	S69°27'27"
29	1187.86	89°27'27"	77.79	S69°27'27"
30	1187.86	89°27'27"	77.79	S69°27'27"
31	1187.86	89°27'27"	77.79	S69°27'27"
32	1187.86	89°27'27"	77.79	S69°27'27"
33	1187.86	89°27'27"	77.79	S69°27'27"
34	1187.86	89°27'27"	77.79	S69°27'27"

WHKS & Co.

NORTHRIDGE HEIGHTS SUBDIVISION
 FOURTH ADDITION

AMES, IOWA

SCALE: 1" = 60'

PLAT NO.: 02-12370

RECORDED BY: S.A.G.

DATE: 07-11-02

1 of 1